

Native Maine Plants Found in Watchic Lake – Screening Day Preliminary List
This list came from the Maine VLPM site on “Watchic Pond” Plant Life. I am not sure who provided this or when, but it could be a starting point for us.

Arrowhead, spp. [Sagittaria spp.](#)

[PM: could not find anything in ME VLMP on this plant. So, source might be questionable]



Bladderwort, floating [Utricularia radiate.](#)

[PM: As reference [All native bladderwort](#)]



Bladderwort, large purple [Utricularia purpurea](#)

[PM: As reference [All native bladderwort](#)]



Source: Keith Williams, VLMP © 2007

Bur-reed, American *Sparganium americanum*



Bur-reed, floating leaf *Sparganium fluctuans*

[PM and second [French Hill Pond lake association](#) source]



Mannagrass, boreal *Glyceria borealis*



Pipewort *Eriocaulon aquaticum*



Pondweed, floating-leaf [*Potamogeton natans*](#)



Pondweed, large-leaf [*Potamogeton amplifolius*](#)

[PM addition based on VLMP comments]



Pondweed, ribbon-leaf [*Potamogeton epihydrous*](#)

[PM Cannot find any reference to this in Maine VLMP books or sites]

Pondweed, slender [*Potamogeton pusillus*](#)



Source: Don Cameron, MNAP, VLMP © 2007

Pondweed, variable (grass-leaved)



The submersed leaves are highly variable in width and length; the leaves lack stems and taper inward at both ends

Quillwort [*Isoetes spp.*](#)

[PM there are dozens of sub-species... so not sure what we look for]

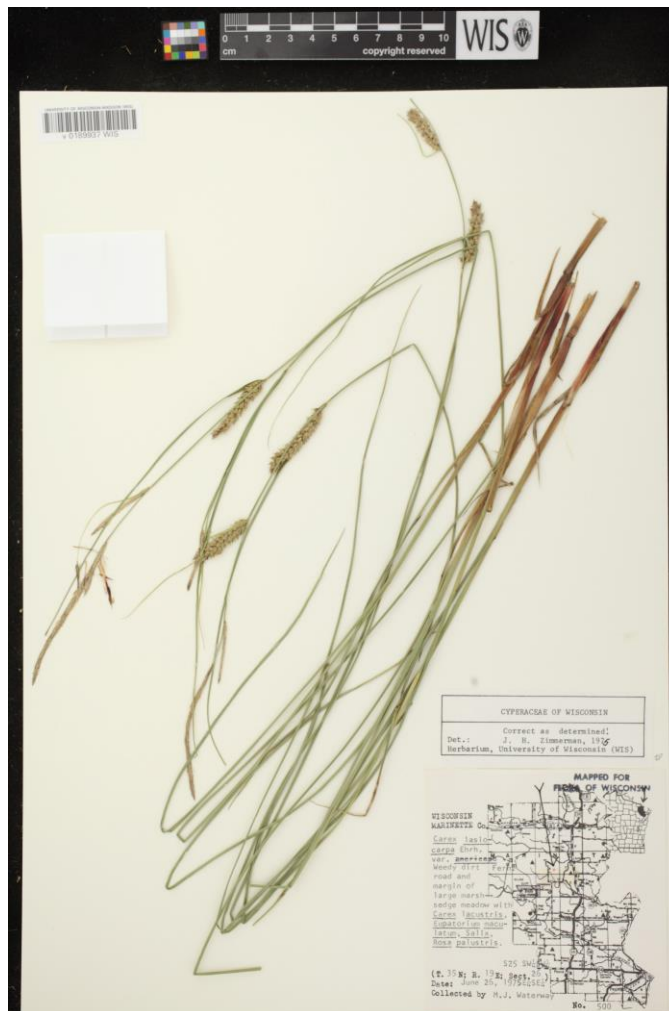
Rush, Canadian [*Juncus Canadensis*](#)



Rush, Brown-fruited *Juncus pelocarpus*



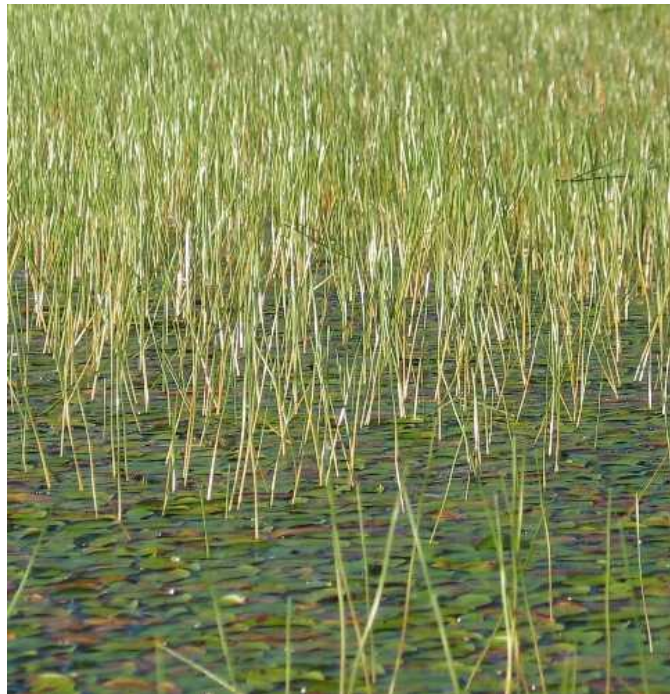
Sedge, woollyfruit *Carex lasiocarpa* var. *Americana*



Spatterdock or Cow Lily *Nuphar variegata*



Spikerush, Robbin's *Eleocharis robbinsii*



Spikerush, needle *Eleocharis acicularis*



Stonewort spp. *Nitella* spp.

[PM from VLPM Nitella: No skunky odor. The stems and branches of nitella are generally bright green, translucent and smooth to the touch.]



Water hemlock, bulb-bearing *Cicuta bulbifera*



Water lobelia *Lobelia dortmanna*

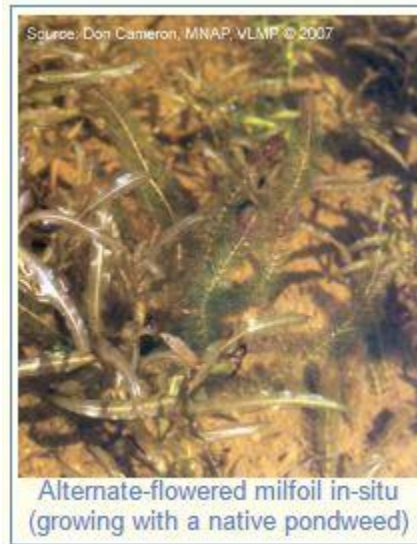


Water-milfoil, dwarf *Myriophyllum tenellum*

[PM Questions this one as VLMP states “is a diminutive bottom dweller. Lacking true leaves, and not bearing any resemblance to the invasive milfoils,”]

Water-milfoil *Myriophyllum species*

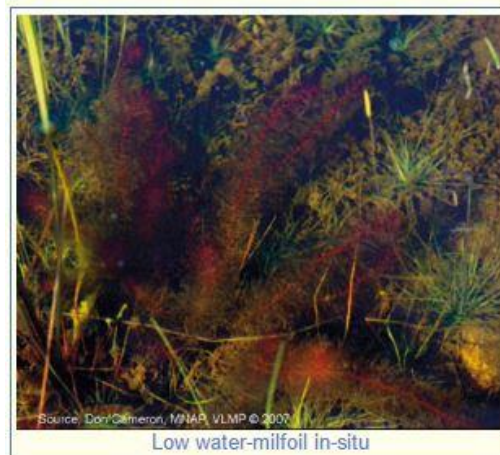
- **Alternate-flowered water-milfoil (*Myriophyllum alterniflorum*)**



- **Farwell's water-milfoil (*Myriophyllum farwellii*)**



- **Low water-milfoil (*Myriophyllum humile*)**



- **Northern water-milfoil** (*Myriophyllum sibiricum*)



- **Whorled water-milfoil** (*Myriophyllum verticillatum*)



Watercress, true [*Nasturtium officinale*](#)



Waterwort *Elatine minima*



Wild rice, Northern [*Zizania palustris*](#)

