



Shoreline Vegetation Workshop and Site Visits

August 13, 2022

Guided by Martha Drew and Nancy McNulty

Funding for this project, in part, was provided by the U.S. Environmental Protection Agency under Section 319 of the Clean Water Act. The funding is administered by the Maine Department of Environmental Protection in partnership with EPA. EPA does not endorse any commercial products or services mentioned.

Curriculum and Marketing

- Review shoreland vegetation, buffers, and landscaping best practices to filter and reduce stormwater. Use best practice information presented at the WLA 2022 Annual meeting.
- Demonstrate best practices in action at properties around Watchic Lake. Some properties have received LakeSmart Awards for their work.
- Marketing of the event was done at the Annual Meeting, via the WLA website, and WLA email newsletter.

Shoreline Vegetation Best Practices and Garden Tours

Learn about shoreline vegetation best practices and see how others around the lake have helped reduce runoff with plantings, diversions, and drainage along the shoreline. Camps we plan to visit are 21 Watchic Manor Rd., 11 Drew Lane, 254 Pequawket Trail, 26 Watchic Crossroad, and 32 East Eleanor Ave. Email [Nancy McNulty](#) or [Martha Drew](#) for details. or fill in our [Contact Us](#) page to sign up.

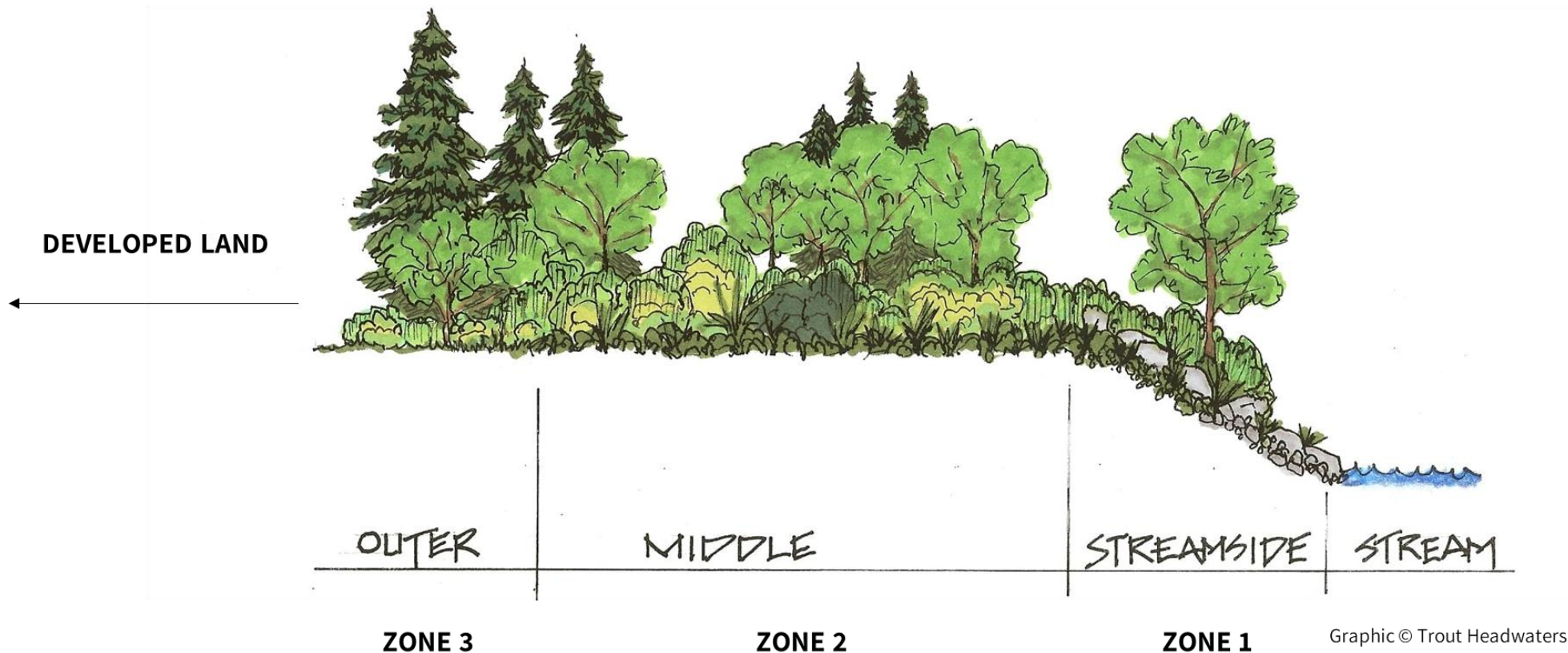


Demonstration locations



Best Practice Described

RIPARIAN BUFFERS ARE OF CRITICAL IMPORTANCE



Best Practice Described

PLANT THESE ALONG THE SHORELINE

Swamp milkweed

Host plant for monarch caterpillars.
Attracts hummingbirds, butterflies, and bees.



Rhodora

Showy flowers.
Attracts butterflies and bees.



Buttonbush

Tolerates floods and up to 3 feet of standing water.
Good for birds.



Red-osier dogwood

Red winter twigs.
Good for birds.



Riparian Buffer and Shoreline Plant Examples



Watchic Crossroad. Trees retained at middle and streamside. Low laying juniper, alder, goldenrod, sweet fern, on embankment.



Watchic Manor Rd. Trees retained at middle and streamside black huckleberry and ferns down embankment.

Best Practice Described

PLANT THESE UP THE BANK

Butterfly milkweed
Attracts hummingbirds,
butterflies, and bees.



Lowbush blueberry
Good for birds and
wildlife (and humans!).
Will grow in acidic soil.



Fragrant Sumac
Ground cover with
sweet smell. Will
grow in
sandy/rocky soil.



**Marginal Wood
Fern**
Drought resistant.
Does well in shade
and sun.



Native Plants on Banks In Action



Watchic Manor Rd. Sweet fern, black huckleberry, thyme down embankment



East Eleanor Ave. Blueberries, ferns, and black huckleberry on steep embankment

Best Practice Described

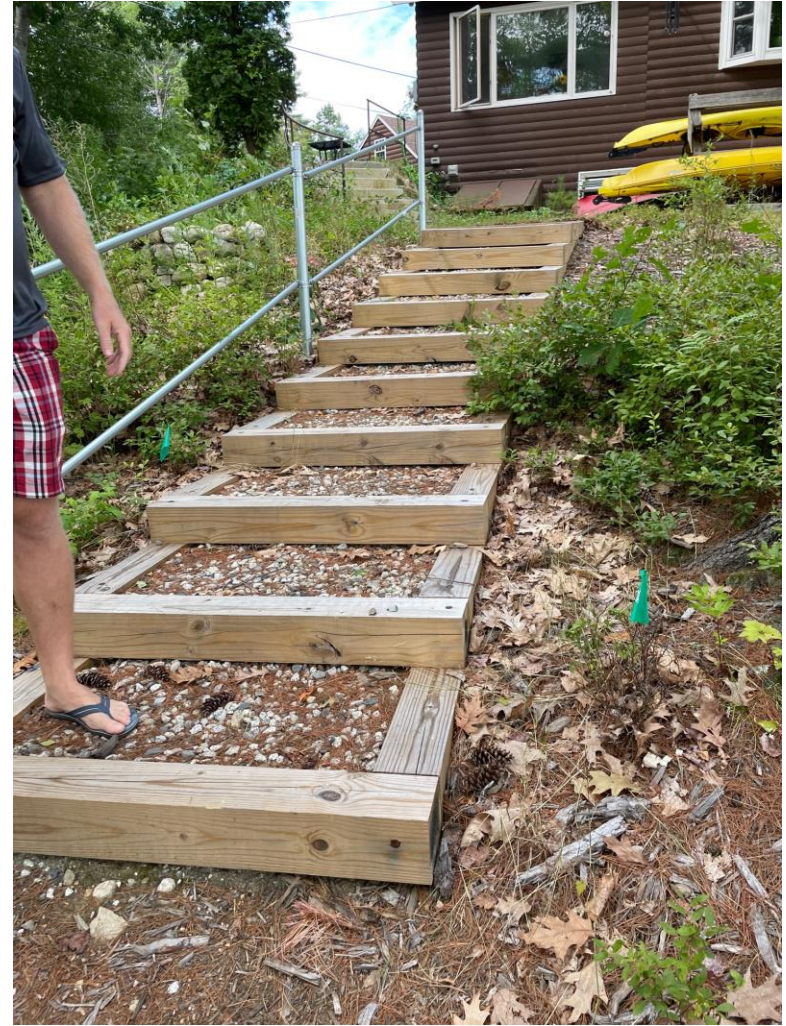
INFILTRATION STEPS



Infiltration Steps In Action



Watchic Crossroad. Permeable grout on steps and river rock on top step.



East Eleanor Ave
Crushed stone within steps.

Best Practice Described

INFILTRATION TRENCH



Trench filled with crushed stone and a geotextile liner to allow roof runoff to infiltrate.

Infiltration Trenches in Action



Watchic Rd 9. While not officially on the tour, stopped to view homeowner installed drip trench (using landscape fabric and river rock).

Best Practice Described

RAIN GARDEN

Before



After

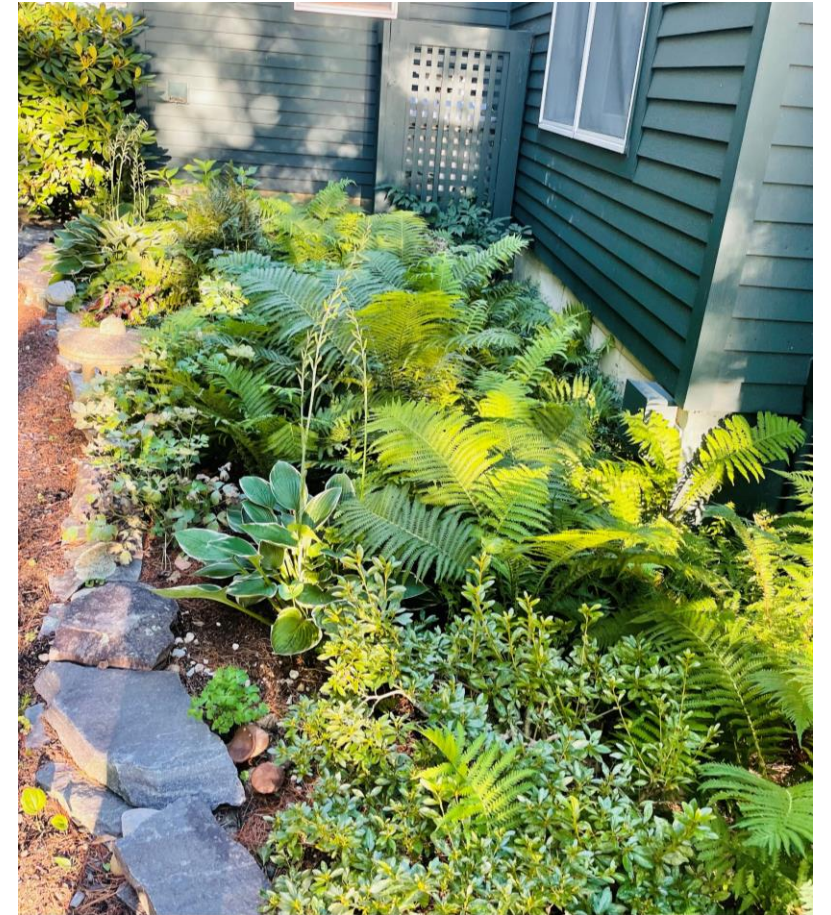


Native plant garden in a depression, can be surrounded with berm to retain water. May contain various layers of specially engineered soil and crushed stone to promote stormwater infiltration.

Rain Garden Examples Shown



Watchic Road 3. Small retention pond / raingarden installed over crushed stone and loam, currently seeded with grass. Blueberries, ferns, and other native plant to be added in the fall



Watchic Manor Rd. Rain garden in area around drip trench. Plants include various ferns, sumac, Blueberries.

For more information check out

- LakeSmart resources: <https://www.lakes.me/lakesmart>
- Maine DEP: <https://www.maine.gov/dep/land/watershed/bufa.html>
- Watchic Lake Association: www.watchiclake.org
- Before making any major changes, check with the [Standish Code Enforcement Office](#)
- Portland Water District on Lake Friendly Gardening
 - [Native Plants Part Sun & Dry Soils PWD](#)
 - [Native Plants Part Sun & Moist-Wet Soil PWD](#)
 - [Native Plants Shade & Dry Soils PWD](#)
 - [Native Plants Shade & Moist Soils PWD](#)
 - [Native Plants Sun & Dry Soils PWD](#)
 - [Native Plants Sun & Moist to Wet Soil PWD](#)
 - [Planting and Maintaining Buffers to Protect Water Quality PWD](#)
 - [Rain Gardens to Manage Roof Runoff PWD](#)